

## **S28S Series**

### **Application Manual**



**S28S500D24Z**



**S28S500D24ZM**

#### ■ Overview

S28S Series is a closed-loop type and through-type current sensor.

The rated current is 500 A and the maximum current is  $\pm 800$  A.

This series has the input and output format of a connector type and variations as shown in table 1.

Table 1: Variation in input and output connector

Model number of current sensor	<b>S28S500D24Z</b>	<b>S28S500D24ZM</b>
Model number of input and output connector [Old Model number]	39-28-8040 [5566-04A-210]	38-00-6293 [6410-03C(102)]
Connector manufacturer	Molex	Molex

#### ■ Characteristics

- Through-type supply system of the current to be measured.
- Closed-loop-type circuit configuration.
- Input/output of connector-type format with panel mounting structure.
- Power-supply voltage can be used in the range between  $\pm 15$  V and  $\pm 24$  V.
- Output in the form of current, given as 1/5000 of the current to be measured.
- Very high accuracy output current of within  $\pm 0.5\%$ .
- Excellent output linearity of within  $\pm 0.1\%$ .

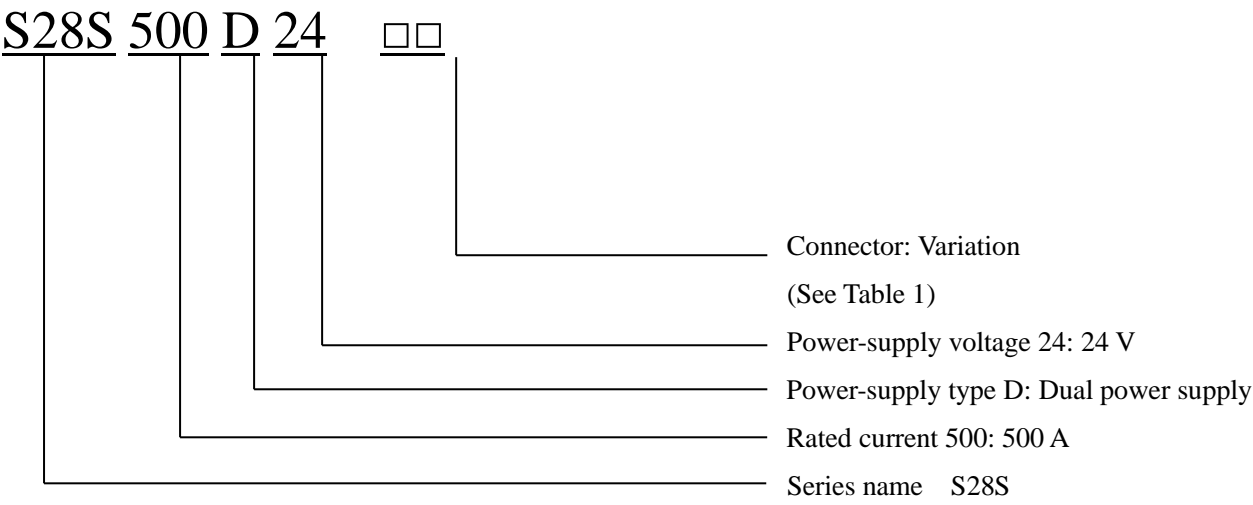
S28S Series

- Fast response: Step response (response speed  $\frac{di}{dt}$ ) of less than 1  $\mu$ s.
- Withstand voltage: AC 4000 V for 1 minute
- Satisfies conformity safety standard [            ].

■ Use

- Power monitoring equipment for solar photovoltaic power generation, etc.
- Current measurement of a generator

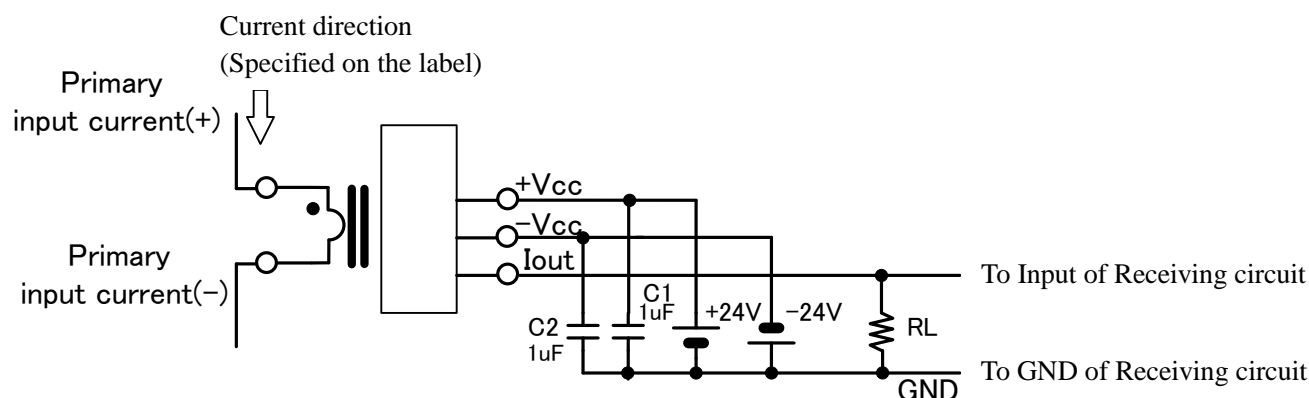
■ 形式



## ■ Standard connection diagram

S28S500D24Z

S28S500D24ZM



Terminal number

Name	S28S500D24Z	S28S500D24ZM
+Vcc	4	1
-Vcc	2	3
Iout	3	2

Fig. 1: S28S500D24Z/S28S500D24ZM Standard connection diagram

## ■ Description of input/output terminals: S28S500D24Z/S28S500D24ZM

Table 2: Description of input/output terminals

Terminal number	Terminal name	Description	Remarks
See Fig. 1	NC		
	+Vcc	Positive power-supply terminal. Apply +15 V ~ +24 V.	
	-Vcc	Negative power-supply terminal. Apply -15 V ~ -24V.	
	Iout	Output terminal. The current output between this terminal and GND is 1/5000 of the current to be measured. A resistor can be inserted between this terminal and GND for measuring the voltage corresponding to the current to be measured.	*
	Primary current (+)	The plus side of the primary current (measured current). When the primary current flows in the direction of the arrow ( $\Rightarrow$ ) on the label, the output current has polarity in the direction from the output terminal (Iout) to GND.	Through-hole
	Primary current (-)	The minus side of the primary current (measured current).	Through-hole

## S28S Series

\* The standard value of output current  $I_{out} = \frac{1}{5000} \times I + I_{of}$  .

$I$  : Current to be measured       $I_{of}$  : Offset current ( $= 0A_{typ}$ )

## ■ Description of basic characteristics

The S28S Series current sensor is used for the measurement of 500-A-class current and outputs 1/5000 of the current to be measured from the output terminal. The internal structure is composed of a core (a magnet) having a through-hole and an electronic circuit. The electronic circuit is composed of a negative feedback coil constituting a closed loop and a phase compensation circuit for stable operation of the amplifier and the closed loop. The power-supply voltage is required for both plus and minus directions. The power-supply voltage should lie within the range of  $\pm 15$  V and  $\pm 24$  V.

The current to be measured is passed through a bus bar or a cable through the through-hole of the sensor. The magnetic flux generated by the current to be measured converges to the built-in core (a magnet), and the built-in amplifier energizes the canceling current to the negative feedback coil in such a way that the generated magnetic flux becomes extremely small, i.e., approximately 0 Tesla. That is, a current is supplied to the negative feedback coil so as to cancel the magnetic flux generated by the current to be measured. The magnetic flux of the core (a magnet) is proportional to (current) times (number of turns). The number of turns of the negative feedback coil is 5000 and the current to be measured is passed through the through-hole once (one turn). Therefore, when 1/5000 of the current to be measured is supplied to the negative feedback coil, the magnetic flux of the core (magnet) is canceled and approaches zero. The current applied to the negative feedback coil for the cancellation of magnetic flux is output from the output terminal. In this way, the output current is 1/5000 of the current to be measured. The output current can be measured by converting it into a voltage with a measuring resistor connected between the output terminal and GND. The output polarity is in the direction in which the current flows out from the output terminal when the current to be measured is supplied in the direction of the arrow described on the sensor body. That is, when the current to be measured is supplied in the direction indicated by the arrow, the measuring resistor outputs a voltage of plus polarity. The sensitivity (output current/current to be measured) of the current sensor of the closed-loop configuration is 1/(number of turns of negative feedback winding). It is little affected by fluctuations in the sensitivity of the Hall element and the gain of the AMP, but is determined by the number of turns of the coil. Therefore, the closed-loop S28S Series current sensor can achieve a high accuracy in the output within  $\pm 0.5\%$  and output linearity within  $\pm 0.1\%$ .

Because the current output from the output terminal acts as a current source, it is negligibly affected by the wiring resistance from the output terminal of the sensor to the measuring resistor. Thus, accurate current measurement is possible by paying attention to the influence of the accuracy of the measuring resistor.

This current sensor operates in a manner similar to that of a current transformer so that a sharp change in the current can be measured. When the current to be measured changes stepwise, high-speed response is possible. In fact, when the current to be measured rises at the rate of 100 A/ $\mu$ s, the measured value reaches 90% of the target value within 1  $\mu$ s.

This sensor has a panel-mounting structure and a connector structure for power-supply and output terminals. Two kinds of variations are available for the connector.

■ Block diagram ( $\pm 15\text{ V} \sim \pm 24\text{ V}$  dual power-supply type)

S28S500D24Z

S28S500D24ZM

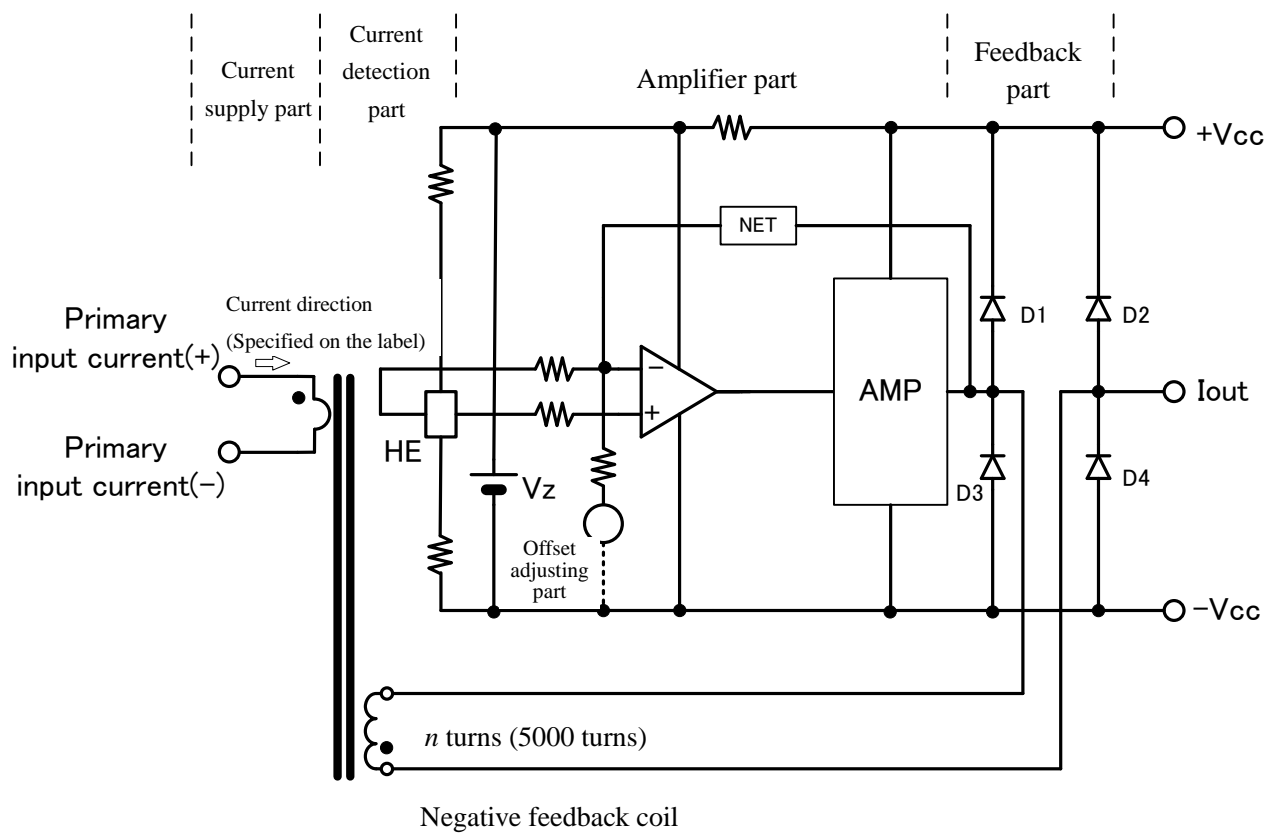


Fig. 2: S28S Series: Internal block diagram

## ■ Description of block diagram

### Current-flowing unit

The current-supply part consists of a bus bar or electric wire that passes through the through-hole in the sensor body. The current to be measured is supplied to the bus bar or the electric wire passing through the through-hole. The magnetic flux generated by the current to be measured is concentrated on the core, which has high magnetic permeability. A Hall element is inserted in the core as a magnetic-detection element. The magnetic flux of the core is detected and converted into voltage. The bus bar or electric wire generates heat owing to its own resistance component (copper loss). Choose either a bus bar or electric wire corresponding to the magnitude of the energizing current such that the temperature of the sensor does not exceed the specified value by heat radiation of the current even when the ambient temperature reaches the allowable maximum value.

In addition to the copper loss caused by the penetrated bus bar and electric wire, heat is generated owing to iron loss (core loss) of the core built in the sensor. Each loss varies depending on various conditions such as the magnitude, frequency, and waveform of the current to be measured. The loss increases with the effective current value or with the dominant frequency component of the current to be measured. When the current contains high-frequency components other than those of the fundamental wave, iron loss further increases. Therefore, confirmation using an actual current is necessary.

### Current-detection unit

The current to be measured (primary input current) is passed through the through-hole. The generated magnetic flux is focused by the core and applied to the magnetic-detection element (Hall element, HE).

On the other hand, approximately 1/5000 of the current to be measured flows in the negative feedback coil, and a magnetic flux is generated in the direction opposite to the magnetic flux generated by the current to be measured. Because the number of turns of the negative feedback coil is 5000, the magnetic flux of the core is canceled and becomes almost zero. The current flowing through the negative feedback coil is the same as the output current.

Therefore, the output current becomes approximately 1/5000 of the current to be measured. The magnetic-detection element (Hall element) detects net minute magnetic flux generated by the current to be measured and the negative feedback coil and converts it to voltage. The converted voltage is sent to the amplifier.

### Feedback section of amplifier unit

The amplifier circuit amplifies the output voltage of the magnetic-detection element (Hall element) and converts it into current. The current from the amplifier circuit is sent to the feedback circuit. The feedback circuit provides current to the feedback coil. As a result, it constitutes a closed loop consisting of the magnetic-detection element  $\Rightarrow$  amplifier circuit  $\Rightarrow$  feedback circuit  $\Rightarrow$  negative feedback coil  $\Rightarrow$  core magnetic flux  $\Rightarrow$  (magnetic-detection element). See Fig. 3.

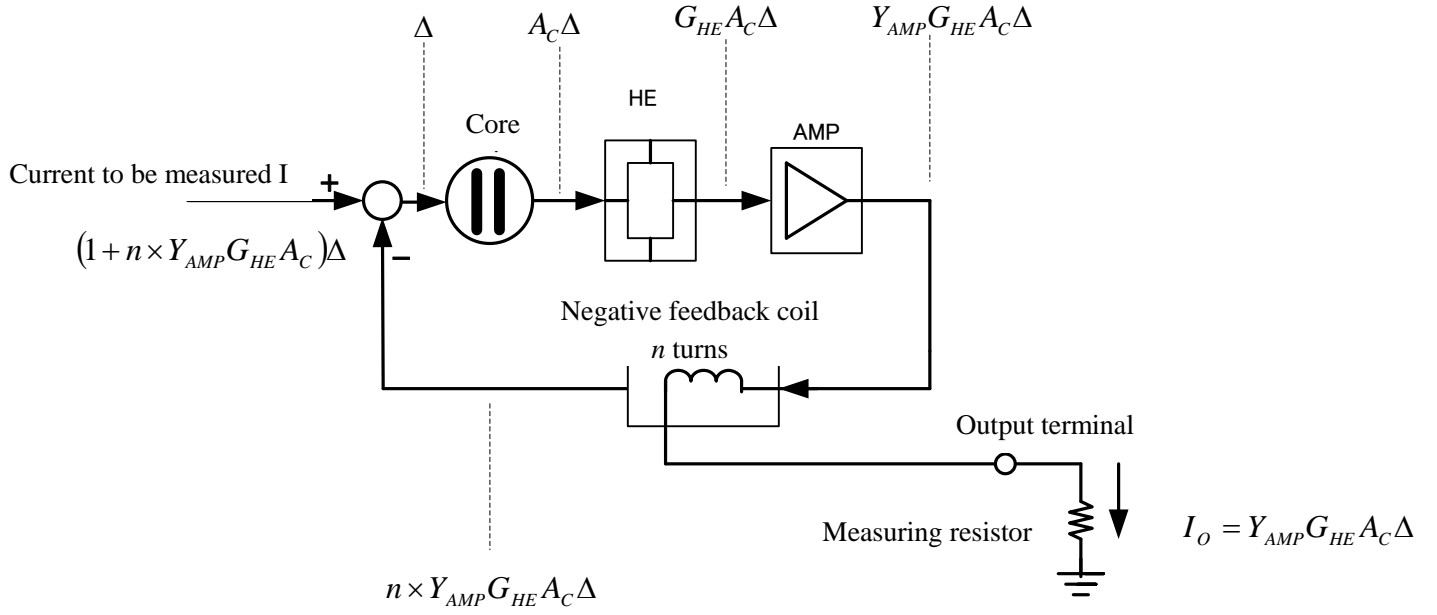


Fig. 3: Closed-loop block diagram

The effects on the core of the current  $I_O$  flowing in the negative feedback coil and of the current  $I$  to be measured almost completely cancel each other because the effective current in the feedback coil is multiplied by the number of turns (ampere turn). The difference between these effective currents becomes equivalent to the net minute current  $\Delta$  acting on the core.

The above-mentioned minute current generates small magnetic flux  $A_C \Delta$  through the core of high magnetic permeability. The small magnetic flux  $A_C \Delta$  is detected by the Hall element HE and is converted to voltage  $G_{HE} A_C \Delta$ .

Furthermore, this voltage is amplified by AMP and converted into current  $Y_{AMP} G_{HE} A_C \Delta$ . This current  $Y_{AMP} G_{HE} A_C \Delta$  is output from the output terminal as the output current. On the other hand, the same current flows through the negative feedback coil and acts as the current for canceling the current to be measured. When the number of turns of the negative feedback coil is  $n$ , the ampere turn is  $n \times$  (current flowing through the negative feedback coil). Therefore, as a result of cancelation, the net minute current  $\Delta$  that excites the core can be written as

$$\Delta = I - n \times Y_{AMP} G_{HE} A_C \Delta. \quad \text{Equation 1}$$

On the other hand, the output current is given by

$$I_O = Y_{AMP} G_{HE} A_C \Delta. \quad \text{Equation 2}$$

From Equations 1 and 2, therefore, the relationship between the output current and the current to be measured is obtained as

$$\begin{aligned} \frac{I_o}{I} &= \frac{Y_{AMP} G_{HE} A_C \Delta}{\Delta + n \times Y_{AMP} G_{HE} A_C \Delta} \\ &= \frac{1}{n + \frac{1}{\mu}}, \end{aligned} \quad \text{Equation 3}$$

where  $\mu \equiv Y_{AMP} G_{HE} A_C$ .

Because  $\mu$  of the closed-loop current sensor has a very large value, Equation 4 holds while maintaining high accuracy of the output current within  $\pm 0.5\%$ .

$$\frac{I_o}{I} = \frac{1}{n} \quad \text{Equation 4}$$

Because  $n=5000$ , the output current is 1/5000 of the current to be measured.

### Current transformer

When the current to be measured suddenly changes, a current flows through the negative feedback coil in accordance with Lenz's law in such a way that the magnetic-flux change of the core caused by the current to be measured is canceled. This current is 1/5000 of the change of the current to be measured, and becomes the output current. When the current to be measured increases as shown by  $\Rightarrow$  in Fig. 4, the current of the negative feedback coil increases in the  $\rightarrow$  direction, is output from the output terminal, flows from the measurement resistor  $R_L$  to GND, and returns from the minus terminal to the negative feedback coil.

Because the output current returns from the power supply terminal to the negative feedback coil via GND, it is necessary to shorten this path. When a transient current of the output current flows, C1 and C2 are recommended to be 10  $\mu$ F or more.

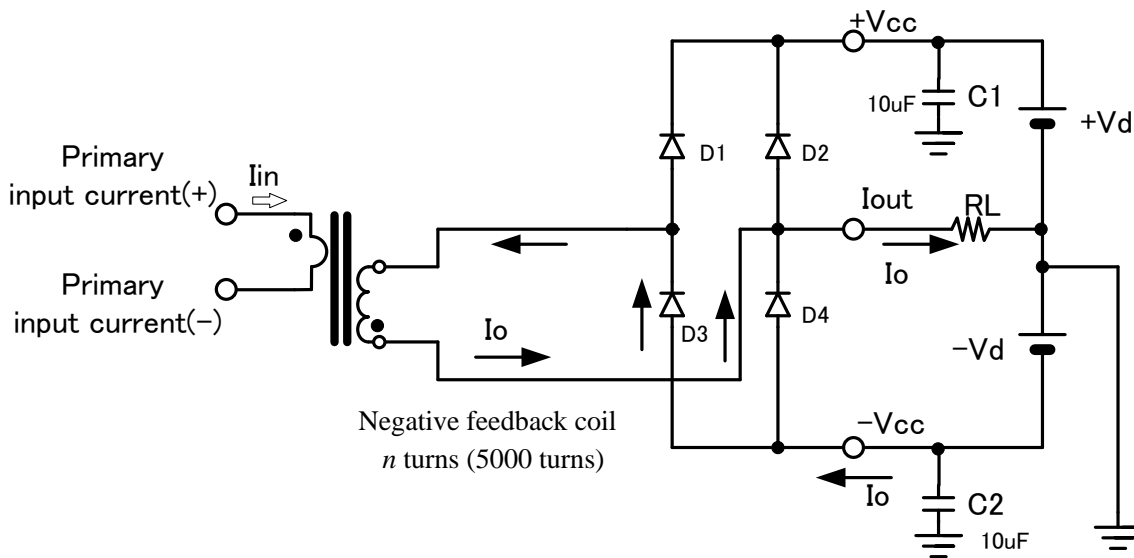


Fig. 4: Equivalent circuit of current transformer operation

### Offset adjustment unit

The offset current is a reference of the output current and is an output current when the current to be measured is 0 A. For the S28S Series, the offset current is 0 A.

The main origin of a possible deviation of the offset current from the standard value of 0 A lies in the fact that the Hall element HE, which is the magnetic sensing element, can have an offset voltage. The offset voltage of the Hall element is a minute voltage output even in the absence of applied magnetic flux. A minute output current generated by this offset voltage is the origin of the deviation of the offset current. Deviation of the offset current can also be caused by the amplifier section in addition to the Hall element. Before the product is actually shipped, adjustment is made, using the offset adjusting part, in such a way that the overall offset is comprehensively canceled out and falls within a predetermined deviation.

## ■ Application

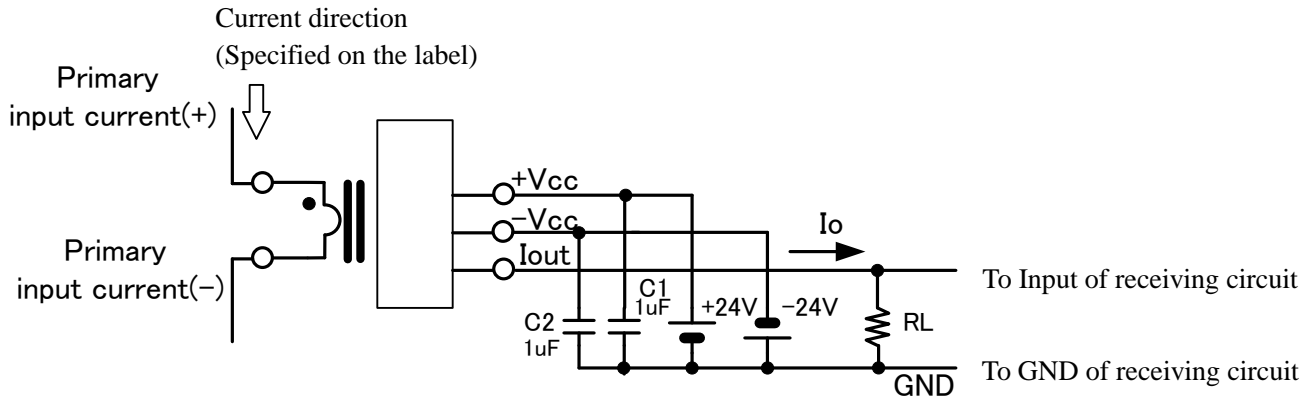


Fig. 5: Application

[Note]

The application shown below is not within the assurance standard of the S28S Series current sensor. In other words, the accuracy of the application and the performance corresponding to the parameter values of the parts shown below are not guaranteed. Therefore, when selecting circuits and component parameters during the design of actual products, sufficient evaluation based on careful consideration of safety and the stability of characteristics is necessary.

### Basic operation

This current sensor converts the current to be measured into output current given as 1/5000 of the current to be measured. The output current  $I_o$  in Fig. 5 flows through the measuring resistor  $RL$  connected between the output terminal ( $I_{out}$ ) and GND. First, the voltage across the measuring resistor  $RL$  is measured, then the output current  $I_o$  is calculated, and finally, the current to be measured  $I_{in}$  is obtained as

$$I_{in} = 5000 \times I_o = 5000 \times \frac{V_{RL}}{RL}, \quad \text{Equation 5}$$

where

$V_{RL}$  is the voltage between the terminals of the measuring resistor  $RL$ .

The output current  $I_o$  flowing through the measuring resistor  $RL$  passes from the positive power supply through the AMP circuit to the measuring resistor  $RL$ , and returns to the power supply via GND.

Therefore, the  $\pm 24$  V power supply is required to have sufficient capacity to supply the output current  $I_o$  plus the current consumed by the sensor.

The current to be measured  $I_{in}$  can be calculated from the voltage  $V_{RL}$  across the measuring resistor  $RL$  using Equation 5.

### Measuring resistance $RL$

The measuring resistance  $RL$  is restricted by Equation 6 for a given power-supply voltage and the maximum current to be measured  $I_{MAX}$ . As shown in Fig. 6, the voltage at the output terminal decreases from each supply voltage by a fixed voltage  $v_{RE}$ , because of Q1 and Q2 in the sensor, resistors R1 and R2 connected to the emitter, and operational constraints of the preamplifier. Therefore, this voltage difference given by  $v_{RE}$  should be properly considered, and the allowable voltage range of the output terminal Iout is within the range of  $Vd - v_{RE}$  on the plus side and  $-(Vd - v_{RE})$  on the minus side. For such reasons, the maximum value  $I_{MAX}$  of the output current and the measuring resistance  $RL$  are subject to the constraint given by

$$\left| \frac{I_{MAX}}{5000} (R_S + RL) + v_{RE} \right| \leq Vd, \quad \text{Equation 6}$$

where  $R_S$  is the DC resistance of the negative feedback coil ( $\Omega$ ),

$v_{RE}$  is the necessary difference voltage from the power-supply voltage (V),

$Vd$  is the absolute value of the positive and negative power-supply voltage (V),

$RL$  is the measuring resistance ( $\Omega$ ),

and  $v_{RE}$  is considered to be about 2.0 V to 2.5 V.

Because  $R_S$  is the DC resistance of a copper wire, it has temperature characteristics. The resistance  $R_S|_{T=t}$  at coil temperature  $t$  is given by

$$R_S|_{T=t^\circ C} \approx 58.7 \{1 + 0.0043(t - 25)\}. \quad \text{Equation 7}$$

Equation 7 gives

$$R_S|_{T=70^\circ C} \approx 58.7 \times \{1 + 0.0043(70 - 25)\} \approx 70\Omega \text{ at } T_c=70^\circ C.$$

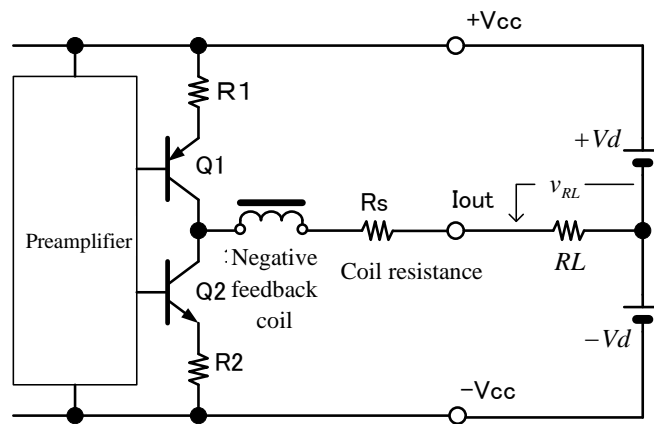


Fig. 6: Equivalent circuit of output circuit

When the coil temperature is 70°C or less, the measuring resistance satisfying Equation 6 is shown in Fig 7.

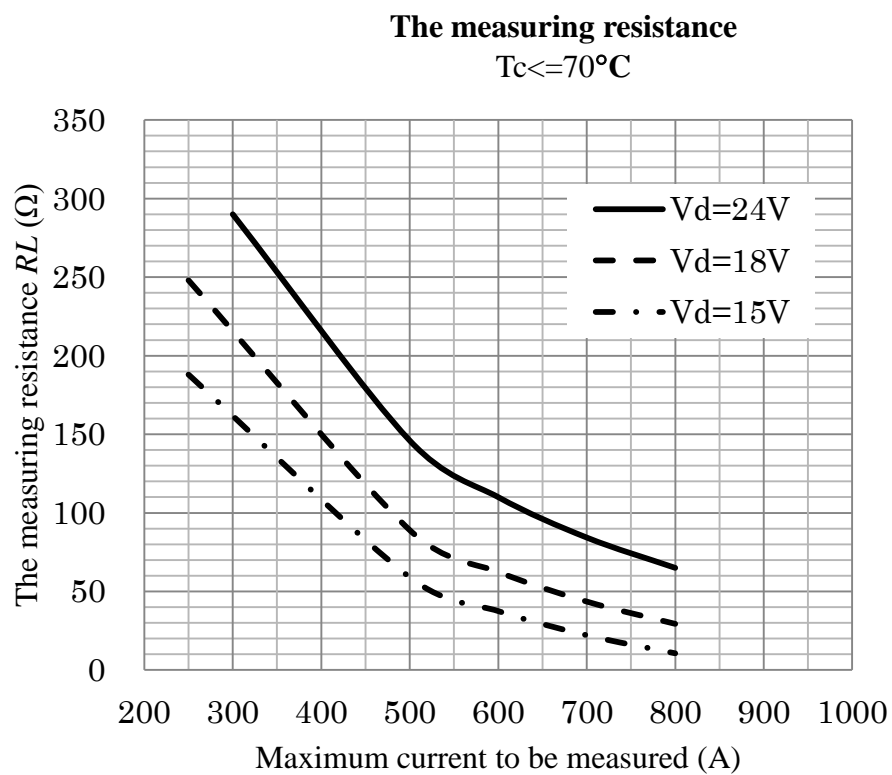


Fig. 7: The measuring resistance (when  $T_c=70^\circ\text{C}$  or lower)

### Minimum measuring resistance $RL$

The output current passes through each component such as the negative feedback coil and the final stage transistors Q1 and Q2 of AMP. As a result, power loss  $P_{INT}$  accompanying the output current shown in Equation 8 occurs inside the sensor.

$$\begin{aligned} P_{INT} &= I_o \{Vd - RL \times I_o\} \\ &\approx Vd \times I_o - RL \times I_o^2 \end{aligned} \quad \text{with output current } I_o \quad \text{Equation 8}$$

When the output current is constant, the internal loss  $P_{INT}$  associated with the output current increases as the power-supply voltage increases and the measurement resistance decreases. Therefore, when the power-supply voltage is 24 V, the minimum measuring resistance is limited to 5  $\Omega$  or more.

Note that the magnitude of the current to be measured under continuous operation is limited to the rated current value of 500 A because of constraints associated with internal loss.

### Example of selected measuring resistance $RL$

Condition: Power-supply voltage  $Vd$ , plus side +24 V $\pm$ 10%, minus side -24 V $\pm$ 10%

Maximum current to be measured  $I_{MAX}$ : 750 A

Maximum ambient temperature  $T_a$ : 70°C

Selected result: The measuring resistance  $RL = 58\Omega$  from the following (1) and (2).

#### (1) Maximum measured resistance

Because the detection voltage becomes higher and stronger against noise as the resistance increases, it is recommended to select as high a resistance as possible.

□First, the measuring resistance becomes 74  $\Omega$  from the solid curve of the power-supply voltage of 24 V in Fig. 8.

□Next, consider a 10% reduction in the power-supply voltage.

Equation 6 gives

$$RL = Vd \times \frac{5000}{I_{MAX}} - v_{RE} \times \frac{5000}{I_{MAX}} - R_s.$$

Therefore, the influence on the allowable maximum resistance of the measuring resistance due to the decrease of the power-supply voltage of 10% becomes

$$24 \times 0.1 \times \frac{5000}{750} = 16\Omega.$$

Therefore, the measuring resistance is reduced from 74  $\Omega$  by 16  $\Omega$  and becomes

$$74\Omega - 16\Omega = 58\Omega.$$

#### (2) Minimum value of measuring resistance

## S28S Series

The internal loss of the sensor increases as the measuring resistance decreases. This internal loss gives the condition that the measuring resistance be  $5\ \Omega$  or more at the ambient temperature of  $70^{\circ}\text{C}$  and at the power-supply voltage of  $\pm 24\ \text{V}$ . Therefore,  $RL = 58\Omega$  satisfies the condition of this minimum measuring resistance.

(Note) Condition for continuous measurement

The current measurable continuously is 500 A or less.

Therefore, the measurement time is limited for 750 A and should be evaluated for each equipment.

### Offset current

The offset current  $I_{of}$  is the output current when the measured current is 0 A. The standard value of the offset current is 0 mA, but it can have a deviation of  $\pm 0.4$  mA. When rated current is measured, it may cause an error within  $\pm 0.4\%$ . The influence of the offset current when measuring the current twice as large as the rated current decreases to a half, and the error can be reduced to within  $\pm 0.2\%$ . On the other hand, when half of the rated current is measured, the output current is 50 mA, and the error of the offset current  $\pm 0.4$  mA increases to a value within  $\pm 0.8\%$ .

In order to minimize the error, it is necessary to select a sensor with a rated current suitable for the measured current.

If a sensor with a rated current higher than necessary is selected, the measurement error due to the offset current increases.

### Output linearity

The output linearity is the difference between a straight line approximating the input/output characteristics of the sensor and the sensor output, and the ratio (%) of the difference to the absolute value is defined as output linearity  $\varepsilon_L$ . The formula for calculating the output linearity of the measurement point J in Fig. 8 is

$$\varepsilon_L|_J = \frac{\Delta_J}{I_O} \times 100 \quad (\%), \quad \text{Equation 9}$$

where

$I_O$  : Rated output current (A),

$\Delta_J$  : Difference of sensor output current at measured current  $I_J$  from approximate linear line (A),

$I_f$  : Rated current (A),

$I_J$  : Measured current at measurement point J (A).

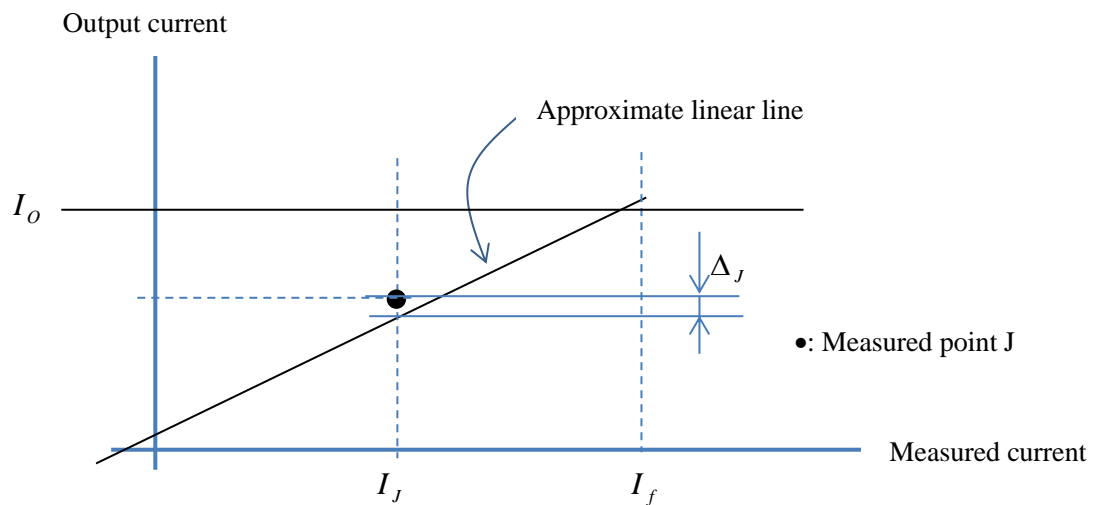


Fig. 8: Output linearity

Hysteresis error

Hysteresis error is caused by the hysteresis characteristic of the core. When the current to be measured is increased from 0 A to 1500 A and then returned to 0 A, a maximum difference of  $\pm 0.2$  mA with respect to the original value arises in the output current. This difference is called hysteresis error.

When the current to be measured increases or decreases during operation, this hysteresis error occurs. The amount of error is related to the amount of change of the current to be measured. The hysteresis error becomes larger when the width of the change increases.

Overall detection accuracy  $\Delta_{TOTAL}|_{t1 \leftrightarrow t2}^{I_{in}}$ 

For the measured current of the sensor,  $I_{in}$ , when the ambient temperature is between  $t1$  (°C) and  $t2$  (°C), the overall detection accuracy of the sensor is determined by the error given by Equation 10 where the ambient temperature is 25°C.

$$\Delta_{TOTAL}|_{t1 \leftrightarrow t2}^{I_{in}} = X_G + \{TcI_O \times \Delta T\} + \left( \frac{\Delta I_{of} + TcI_{of}|_{t1 \leftrightarrow t2} + I_{OH}}{I_{OUT}} \right) \times 100 \quad \text{Equation 10}$$

where  $\Delta T = t1 - 25$  or  $\Delta T = t2 - 25$ ,

$\Delta_{TOTAL}|_{t1 \leftrightarrow t2}^{I_{in}}$ : Overall detection accuracy at ambient temperature between  $t1$  °C and  $t2$  °C for the current to be measured, based on the ambient temperature of 25°C (%),

$I_{OUT}$ : Output current corresponding to measured current  $I_{in}$  (A),

$\Delta I_{of}$ : Deviation of offset current at 25°C (A), Table 3 No. 2,

$I_{OH}$ : Hysteresis error (A), Table 3 No. 4,

$TcI_O$ : Temperature coefficient of output current (%/°C), Table 3 No. 5,

$TcI_{of}|_{t1 \leftrightarrow t2}$ : Maximum variation of offset current deviation in the temperature range from  $t1$  °C to  $t2$  °C (A).

Table 3: S28S Series: List of deviations determining the accuracy of the output current

Ta=25°C

No	Item	Symbol	Standard value (max)	Remarks
1	Output current accuracy	$X_G$	Within $\pm 0.5\%$	
2	Deviation of offset current	$\Delta I_{of}$	Within $\pm 0.0004$ A	
3	Output linearity	$\varepsilon_L$	Within $\pm 0.1\%$	
4	Hysteresis error	$I_{OH}$	Within $\pm 0.0002$ A	
5	Temperature coefficient of output current	$TcI_o$	$\pm 0.01\%/^{\circ}\text{C}$	Excluding variation of offset current
6	Temperature coefficient of offset current	$TcI_{of} _{-40^{\circ}\text{C} \rightarrow +70^{\circ}\text{C}}$	$\pm 0.4$ mAmax	$-40^{\circ}\text{C} \sim +70^{\circ}\text{C}$

## (1) Overall detection accuracy for measurement of rated current

For the measurement of rated current  $I_f$ , Table 3 and Equation 10 give the overall detection accuracy of the rated output current  $I_o$  shown in Tables 4.

Table 4: Overall detection accuracy for measurement of rated current

Ambient temperature	Accuracy $\Delta_{TOTAL}$	Remarks
25°C	$\pm 1.1\%$	*
$-10^{\circ}\text{C} \sim +70^{\circ}\text{C}$	$\pm 2.0\%$	**

$$* \quad \Delta_{TOTAL}|_{25}^{I_f} = X_G + \left( \frac{\Delta I_{of} + I_{OH}}{I_o} \right) \times 100 \quad (\%)$$

$$** \quad \Delta_{TOTAL}|_{-10^{\circ}\text{C} \rightarrow +70^{\circ}\text{C}}^{I_f} = X_G + (TcI_o \times 45) + \left( \frac{\Delta I_{of} + TcI_{of}|_{-10^{\circ}\text{C} \rightarrow +70^{\circ}\text{C}} + I_{OH}}{I_o} \right) \times 100 \quad (\%)$$

where  $\Delta T = 45$ .

(2) Overall detection accuracy for measurement of half of rated current  $\frac{I_f}{2}$

The overall detection accuracy when measuring the current to be measured  $\frac{I_f}{2}$  is given in Tables 5 using items in Table 3 and Equation 10, where  $I_o$  is the rated output current (A).

Table 5: Overall detection accuracy when measuring half of rated current

Ambient temperature	Accuracy $\Delta_{TOTAL}$	Remarks
25°C	±1.8%	*
-10°C ~ +70°C	±3.1%	**

$$* \quad \Delta_{TOTAL} \Big|_{\frac{I_f}{2}}^{25} = X_G + \varepsilon_L + \left( \frac{\Delta I_{of} + I_{OH}}{0.5 \times I_o} \right) \times 100 \quad (\%)$$

$$** \quad \Delta_{TOTAL} \Big|_{\frac{I_f}{2}}^{-10 \sim +70} = X_G + \varepsilon_L + (TcI_o \times 45) + \left( \frac{\Delta I_{of} + TcI_{of} \Big|_{-10 \sim +70} + I_{OH}}{0.5 \times I_o} \right) \times 100 \quad (\%)$$

where  $\Delta T = 45$ .

### Power supply

The plus or minus power supply provides an output current in addition to that consumed by the sensor. Therefore, sufficient capacity of the power supply is necessary to take care of all of them.

When operating as a current transformer, the output current is supplied from the negative feedback coil built into the sensor and passes through each of the plus and minus power supplies. Therefore, the output capacitor of the power supply must be 10 μF or more. Insert a ceramic capacitor of about 10 μF between the +Vcc terminal and GND and between the -Vcc terminal and GND, if necessary.