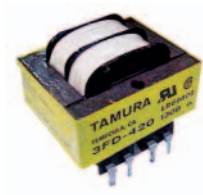




# Laminated Power Transformers



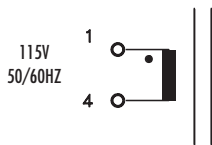
- 115V Single Primary
- 115/230 Dual Primary
- Class B (130°C) Insulation
- 2,500 Vrms Hi-Pot (Pri:Sec)
- 500 & 1KVrms Hi-Pot (Sec:Sec)
- UL94V-0 Flammability
- Recognized Insulation System for custom designs.
- 1.1VA to 12VA
- Inherently and Non-inherently Limited Product
- Class II & III Product
- UL1585 (E96720/E95844)
- UL506 (E79781/E91239)

TAMURA PART NUMBER		SECONDARY RMS RATING				SIZE	CLASS
Single 115V	Dual 115/230V	PARALLEL CONNECTED		SERIES CONNECTED			
		AC	RMS	AC	RMS		
3FS-210	3FD-210	5.0	0.220	10.0 CT	0.110	2	II
3FS-310	3FD-310	5.0	0.500	10.0 CT	0.250	3	II
3FS-410	3FD-410	5.0	1.200	10.0 CT	0.600	4	II
3FS-510	3FD-510	5.0	2.400	10.0 CT	1.200	5	II
3FS-212	3FD-212	6.3	0.180	12.6 CT	0.090	2	II
3FS-312	3FD-312	6.3	0.400	12.6 CT	0.200	3	II
3FS-412	3FD-412	6.3	1.000	12.6 CT	0.500	4	II
3FS-512	3FD-512	6.3	2.000	12.6 CT	1.000	5	II
3FS-216	3FD-216	8.0	0.140	16.0 CT	0.070	2	II
3FS-316	3FD-316	8.0	0.300	16.0 CT	0.150	3	II
3FS-416	3FD-416	8.0	0.800	16.0 CT	0.400	4	II
3FS-516	3FD-516	8.0	1.600	16.0 CT	0.800	5	II
3FS-220	3FD-220	10.0	0.110	20.0 CT	0.055	2	II
3FS-320	3FD-320	10.0	0.240	20.0 CT	0.120	3	II
3FS-420	3FD-420	10.0	0.600	20.0 CT	0.300	4	II
3FS-520	3FD-520	10.0	1.200	20.0 CT	0.600	5	II
3FS-224	3FD-224	12.0	0.090	24.0 CT	0.045	2	II
3FS-324	3FD-324	12.0	0.200	24.0 CT	0.100	3	II
3FS-424	3FD-424	12.0	0.500	24.0 CT	0.250	4	II
3FS-524	3FD-524	12.0	1.000	24.0 CT	0.500	5	II
3FS-228	3FD-228	14.0	0.080	28.0 CT	0.040	2	II
3FS-328	3FD-328	14.0	0.170	28.0 CT	0.085	3	II
3FS-428	3FD-428	14.0	0.400	28.0 CT	0.200	4	II
3FS-528	3FD-528	14.0	0.840	28.0 CT	0.420	5	II
3FS-236	3FD-236	18.0	0.060	36.0 CT	0.030	2	III
3FS-336	3FD-336	18.0	0.130	36.0 CT	0.065	3	III
3FS-436	3FD-436	18.0	0.340	36.0 CT	0.170	4	III
3FS-536	3FD-536	18.0	0.700	36.0 CT	0.350	5	III
3FS-248	3FD-248	24.0	0.046	48.0 CT	0.023	2	III
3FS-348	3FD-348	24.0	0.100	48.0 CT	0.050	3	III
3FS-448	3FD-448	24.0	0.250	48.0 CT	0.125	4	III
3FS-548	3FD-548	24.0	0.500	48.0 CT	0.250	5	III

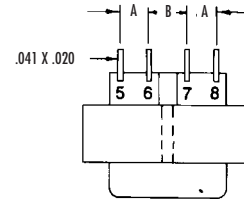
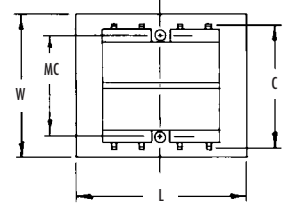
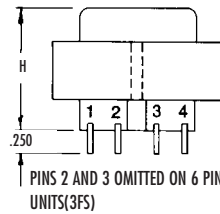
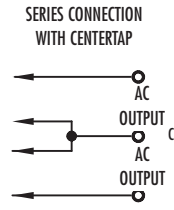
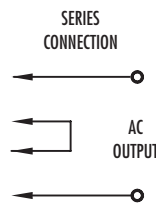
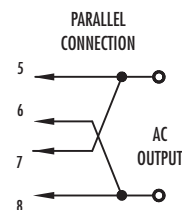
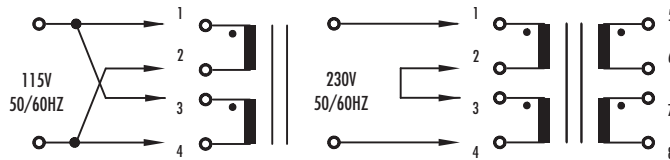
1. -TF suffix for inherently limited product version
2. -1 suffix for 1kV Sec:Sec isolation product version

## Schematics

3FS PRIMARY INPUT CONNECTIONS



3FD PRIMARY INPUT CONNECTIONS



## Dimensions Inches (mm)

SIZE	VA <sup>2</sup>	L	W	H	MC	A	B	C	LB.
2	1.1	1.44 (36.57)	1.23 (31.24)	1.00 (25.40)	-	.250 (6.35)	.250 (6.35)	1.200 (30.48)	0.17
3	2.4	1.44 (36.57)	1.23 (31.24)	1.26 (32.00)	-	.250 (6.35)	.250 (6.35)	1.200 (30.48)	0.25
4	6	6	1.69 (42.93)	1.36 (34.54)	1.0625 <sup>1</sup> (26.92)	.250 (6.35)	.350 (8.89)	1.280 (32.51)	0.44
5	12	12	1.97 (50.04)	1.63 (41.40)	1.5 <sup>1</sup> (38.10)	.300 (7.62)	.400 (10.16)	1.41 (35.81)	0.70

Note 1: Clearance hole for 4-40 x 1 3/8" nylon mtg. screws.  
 Note 2: Ratings based on 115V nominal input.  
 All dimensions are ± 0.02 (0.50) unless otherwise noted.

## Packaging:

Size	Tube	Tray
2	10	80
3	10	60
Size	Tube	Tray
4	10	50
5	10	50

## TAMURA CORPORATION

43352 Business Park Drive. | P.O. Box 892230 Temecula, CA 92589-2230 | www.tamuracorp.com

USA  
Tel: 800-872-6624  
Fax: 909-676-9482

Japan  
Tel: 81 (0)3 3978-2111  
Fax: 81 (0)3 3923-0230

United Kingdom  
Tel: 44 (0) 1380 731 700  
Fax: 44 (0) 1380 731 702

Hong Kong  
Tel: 852-2389-4321  
Fax: 852-2341-9689